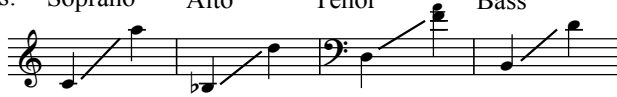


Cantate Domino

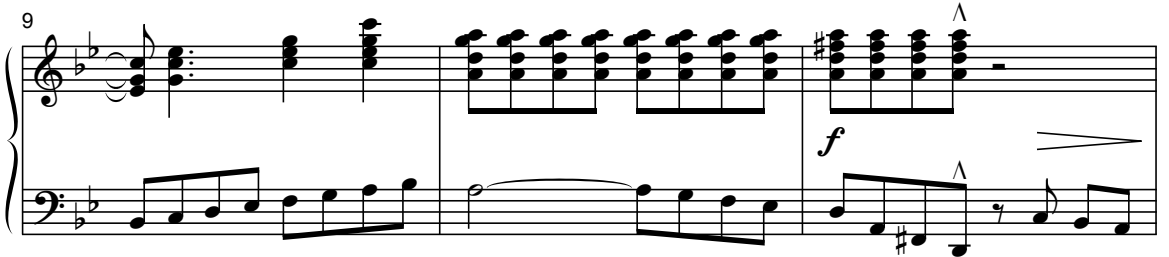
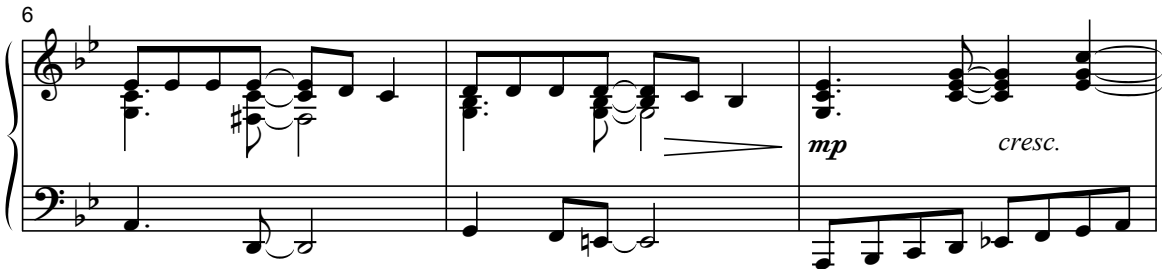
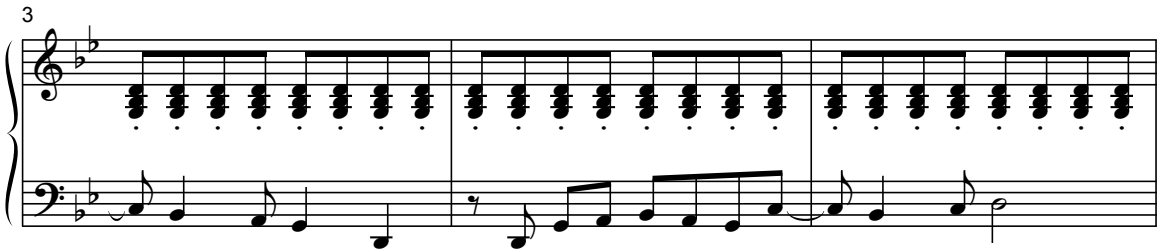
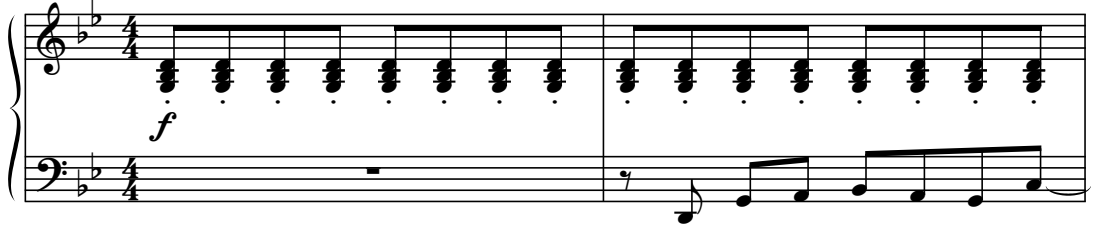
SATB Chorus and Piano*

Words and Music by
Mark Hayes

Ranges: Soprano Alto Tenor Bass



① Driving, with energy ♩ = ca. 138



Duration: approx. 2:30

*Also available: Performance/Accompaniment CD (99/2613H).

© 2010 Heritage Music Press, a division of The Lorenz Corporation. All rights reserved. Printed in U.S.A.

Unauthorized reproduction of this publication is a criminal offense subject to prosecution.

THE CCLI LICENSE DOES NOT GRANT PERMISSION TO PHOTOCOPY THIS MUSIC.

www.lorenz.com

12 SA *mf*

Can-ta-te Do-mi-no can - ti - cum no - vum, Can-ta-te Do-mi-no om -

TB *mf*

mf

15

- nis ter - ra. Can - ta - te Do - mi - no can -

17

- ti-cum no - vum, Can-ta-te Do-mi-no om - nis

20 2 *f* *mf*

ter - ra. Can - ta - te Do - mi - no can -

f *mf*

Can - ta - te

23

- ti - cum no - vum, Can - ta - te Do - mi - no om - nis ter - ra.

Do - mi - no, can - ta - te ter - ra.

26

Can - ta - te Do - mi - no can - ti - cum no - vum, Can - ta - te Do - mi - no

Can - ta - te Do - mi - no,

29 *f* om - nis ter - ra. Can -

32 ta - te Do - mi - no et ben - e - di - ci - te no - mi - ni e -

35 3 *mf* jus. *mf* Sing to the *mp* the

38

Lord. Sing a new song.

41 *mf*

Sing to the Lord. Sing all the

44 *f*

earth. Sing to the Lord. Bless his