

From *A Christmas Story - The Musical***COUNTING DOWN TO CHRISTMAS**for 2-part voices and piano
with optional SoundTrax CD*Arranged by
GREG GILPINWords and Music by
BENJ PASEK and JUSTIN PAUL

With anticipation (♩ = ca. 126-132)

PIANO *mf*

F F/A B♭maj⁹ C F F/A C(add⁹)

3

SOLO 1 *mp*

Good - bye No -

F F/A B♭maj⁹ C F C⁷ *mp*

5

mem - ber Thanks - giv - ing's gone. Now ev - 'ry

C(add⁴) F

* Also available for S.A.T. B. (40005) and S.A.B. (40006).
SoundTrax CD available (40008). SoundPax available (40009) - includes score and set of parts for Flute, Clarinet
Bassoon, Alto Saxophone, Tenor Saxophone, F Horn, Trumpet, 2 Trombones, Glockenspiel, Harp, Bass, and Drumset.

© 2010, 2012 PICK IN A PINCH MUSIC and BREATHELIKE MUSIC
All Rights Administered by WB MUSIC CORP.

This Arrangement © 2013 PICK IN A PINCH MUSIC and BREATHELIKE MUSIC
All Rights Reserved. Printed in USA.

Sole Selling Agent for This Arrangement: Alfred Music Publishing Co., Inc.

To purchase a full-length performance recording of this piece, go to alfred.com/downloads

7 *(end solo)*

house you pass has a plas-tic rein-deer on its lawn.

C(add4) *C*7(#5) F *F*dim F

10 SOLO 2 *mp* 11

The sea-son's start-ing, I'll give you

*F*dim *F* *B*b⁹ *B*b⁶9

12

proof: the neigh-bors bought a nine-foot danc-ing

*A*b^m*a*j¹³ *G*ø⁷ *B*b^m6

14 *(end solo)*

San-ta for their roof.

*E*b/*D*b *C*7sus⁴ *C*7 *B*b/*C*

17 DUET

mp



This year, who wants an - oth - er wool cap? This year, I want a gift I

B \flat (add2)

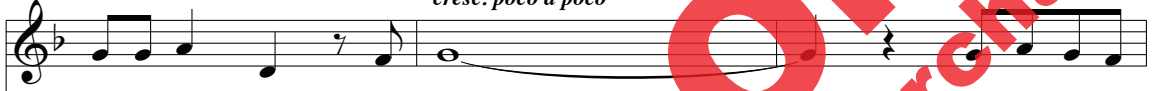
F(add2)/A

B \flat (add2)



20

cresc. poco a poco



want to un - wrap. And I'm _____ run - ning out of

Dm⁷

G⁷

G⁷sus⁴

G⁷(#11)

G⁷



cresc. poco a poco

23

(end duet)



time.

PART I

f

PART II

'Cause it's

f

'Cause it's

C⁷sus⁴

C(add2)

f



25

sub. p

al - most near - ly get - ting close to count - ing down to Christ - mas. It's

sub. p

al - most near - ly get - ting close to count - ing down to Christ - mas. It's

Dmaj⁹

D⁶

Dmaj⁹

Gmaj⁷

A¹³

A⁷(#5)

sub. p

27

al-most time to see the tree light up the town for Christ-mas. It's thir-ty-four thou- sand,

al-most time to see the tree light up the town for Christ-mas. It's thir-ty-four thou- sand,

Dmaj⁹

D⁶

D⁹

D⁶

Gm/B^b

D/A

30

cresc.

mf

fif - ty-eight min-utes a - way. It's

cresc.

mf

fif - ty-eight min-utes a - way. It's

G(add2)

F^{#7}

Bm⁹

E⁹(#11)

cresc.

33

al - most near - ly get - ting close to count - ing down to Christ - mas

al - most near - ly get - ting close to count - ing down to Christ - mas

A Asus A(#11) A

mf cresc. *f*

35

Day!

Day!

Gb Gb/Bb Cbmaj⁹ Db Gb Gb/Bb Db(add4) Gb Gb/Bb Cbmaj⁹ Db

38

39

Take out the tin - sel. Break out the gloves. We're get - ting

Gb Cb/Db Db¹³ Gbmaj⁷/Db Db¹³ Gbmaj⁹ Gb⁶

mf

41

clos - er to the hol - i - day that ever - y - bod - y loves.

Db¹³ Gbmaj⁷/Db Db7(#5) Gb

43

mf

If you look close - ly, and you be -

Gbdim Gb Cbm/G

45

lieve, you might see San - ta soar - ing through the

mf

Amaj⁹ Ab^{ø7} Cbm⁶

47

sky on Christ-mas Eve!

sky on Christ-mas Eve!

E/D

Db⁷sus⁴

Db⁷

Cb/D^b

50

opt. SOLO

mp

This year, ___ don't want a book I won't read. This year, ___ I know the

This year, ___ don't want a book I won't read. This year, ___ I know the

C^b(add2)

G^b(add9)/B^b

C^b(add2)

mp

53

(end solo) *mp* *cresc. poco a poco*

thing that I need. And I'm ___ run-ning out of

And I'm ___ run-ning out of

thing that I need. And I'm ___ run-ning out of

mp *cresc. poco a poco*

And I'm ___ run-ning out of

E^bm¹¹

A^b7

A^b7sus⁴

A^b7(#11)

A^b7

cresc. poco a poco

cresc. poco a poco

56 *mf* *sub. mp*

time. _____ It's

mf *sub. mp*

time. _____ It's

mf *sub. mp*

Cb/Db Db7 Db7(#5)

58

al - most near - ly get - ting close to count - ing down to Christ - mas. It's

al - most near - ly get - ting close to count - ing down to Christ - mas. It's

Ebmaj7 Eb Ebmaj7 Fm11 Bb13

60

al - most time to see the tree light up the town for Christ - mas. It's

al - most time to see the tree light up the town for Christ - mas. It's

Eb Ebaug Eb6 Eb13 Abmaj9 Abm9

62

thir - ty - four thou - sand, fif - ty - three min - utes a -
 thir - ty - four thou - sand, fif - ty - three min - utes a -

Eb/Bb *Abmaj7* *G7*

64

way, a - way. It's
 way, a - way.

Cm7 *G13(#11)*

cresc. *mf*

66

al - most near - ly get - ting close to count - ing down to Christ - mas
 al - most near - ly get - ting close to count - ing down to Christ - mas

Bb7 *Bb7sus4* *Bb7(b5)* *Bb7*

cresc.

68

f

Day! _____ Christ-mas

f

Day! _____ Christ-mas

E \flat Abmaj 9 B \flat 7 E \flat B \flat /A \flat B \flat

70

mf

Day! _____ This year, I want a

Day! _____

E Amaj 9 B 7 E C m Bsus A(add2)

73

shin - y red bike. This year, how 'bout a

mf

I want a mod - el toy plane.

E(add2)/G \sharp A(add2)

75

Li - on - el train? This year, *f*

I want it this year. I hope that

E(add2)/G# C(add2)

77

this year on Christ - mas.

San - ta will hear. Count - ing down to

G(add2)/B C(add2)

79

And I'm run - ning out of

Christ - mas. And I'm

Em¹¹ A⁷ A⁷sus⁴ A⁷(#11) A⁷

82 *mp cresc.*

time. There's on - ly twen - ty - four

mp cresc.

this Christ-mas, this Christ-mas, this Christ-mas, this Christ-mas,

Am⁷/D

mp cresc.

84 *mf*

days till Christ-mas Day. It's

mf

this Christ-mas, this Christ-mas, till Christ-mas Day. It's

Cmaj⁷/D D⁷

mf

86 *sub. p cresc. f*

al - most near - ly get - ting close to count - ing down to Christ-mas. It's

sub. p cresc. f

al - most near - ly get - ting close to count - ing down to Christ-mas. It's

G Am¹¹ D⁹

sub. p cresc. f

88 *sub. p* *cresc.* *f*

al - most time to see the tree light up the town for Christ-mas. It's

al - most time to see the tree light up the town for Christ-mas. It's

G Gaug G⁶ G⁷ Cmaj⁷ Cm

sub. p *cresc.* *f*

90

thir - ty - four thou - sand, for - ty - eight min - utes a -

thir - ty - four thou - sand, for - ty - eight min - utes a -

G/D C B

92

way.

way.

Em A¹³(#11)

94

Al - most near - ly get - ting close to count - ing down to Christ - mas

Al - most near - ly get - ting close to count - ing down

D⁷sus⁴

96

Day! _____

Al - most Christ - mas! Near - ly Christ - mas!

G G/B Cmaj⁹ Dsus G G/B D/C D⁹

98

Soon it will be, can't be Christ - mas Day!

Al - most Christ - mas Day!

G G/B Cmaj⁹ Dsus G⁶ G