

Contents

| | |
|------------------------------------|---|
| HOW TO TUNE THE GUITAR..... | 3 |
| GETTING ACQUAINTED WITH MUSIC..... | 4 |
| NOTE VALUES..... | 5 |

Chords

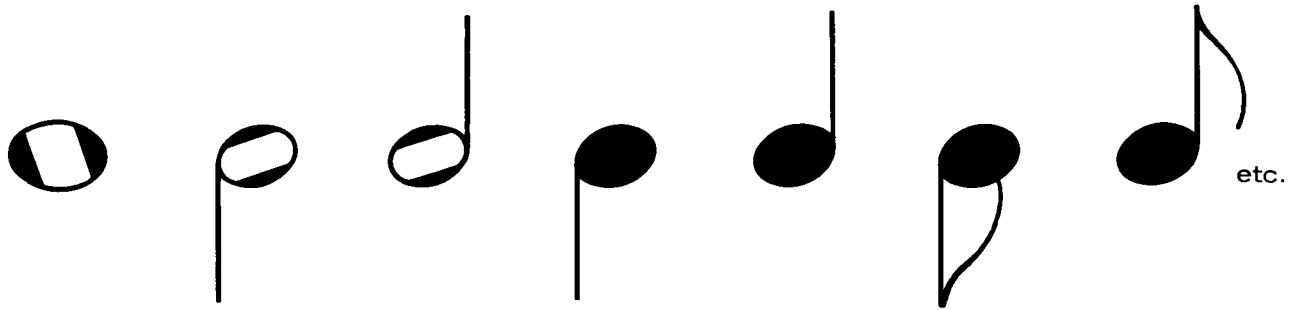
| | |
|---|-------|
| MAJOR, MINOR, SEVENTH CHORDS..... | 6-19 |
| DIMINISHED CHORDS..... | 20 |
| AUGMENTED CHORDS..... | 21 |
| NINTH CHORDS..... | 22-23 |
| MAJOR SIXTH CHORDS..... | 24 |
| MINOR SIXTH CHORDS..... | 25 |
| MAJOR SEVENTH CHORDS..... | 26 |
| MINOR SEVENTH CHORDS..... | 27 |
| SEVENTH CHORDS WITH AUGMENTED FIFTH..... | 28 |
| SEVENTH CHORDS WITH DIMINISHED FIFTH..... | 29 |

Bar Chords

| | |
|---|----|
| MOVABLE BAR CHORDS AND HOW TO USE THEM..... | 30 |
| ROOTS AND BAR CHORDS..... | 31 |
| IDENTIFYING BAR CHORDS..... | 32 |
| MOVABLE MAJOR CHORDS..... | 33 |
| MOVABLE MINOR CHORDS..... | 34 |
| MOVABLE 7th CHORDS..... | 35 |
| MOVABLE MINOR 7th CHORDS..... | 36 |
| MOVABLE MAJOR 7th CHORDS..... | 37 |
| MOVABLE MINOR 6th CHORDS..... | 38 |
| MOVABLE 6th CHORDS..... | 39 |
| MOVABLE 9th CHORDS..... | 40 |

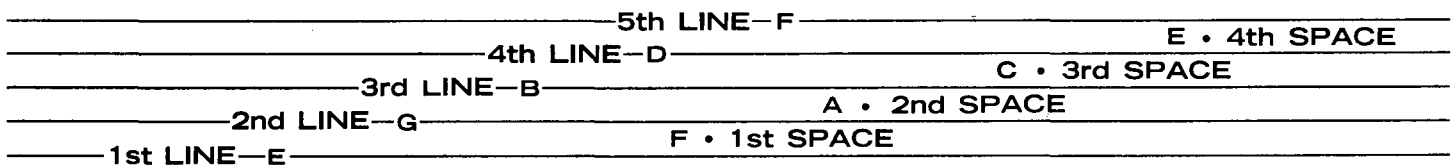
Getting Acquainted With Music

Musical sounds are indicated by symbols called NOTES. Their time value is determined by their color (white or black) and by stems and flags attached to the note:



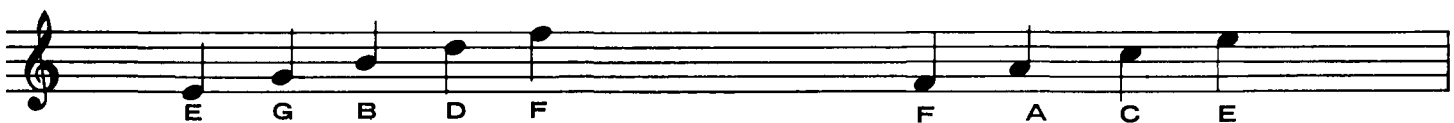
The notes are named after the first seven letters of the alphabet, endlessly repeated to embrace the entire range of musical sound. The name and pitch of the note is determined by its position on five horizontal lines and the spaces between, called the . . .

Staff



NOTES ON THE LINES

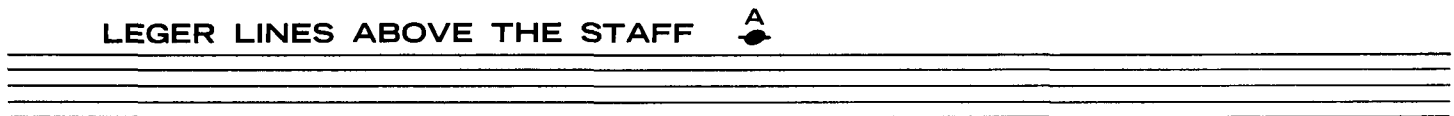
NOTES IN THE SPACES



Because the five-line staff cannot contain all the notes of our musical system, other short lines are added above and below the staff, called . . .

Leger Lines

LEGER LINES ABOVE THE STAFF



LEGER LINES BELOW THE STAFF



Measures

Music is divided into equal parts called MEASURES. A BAR LINE divides one measure from another.

