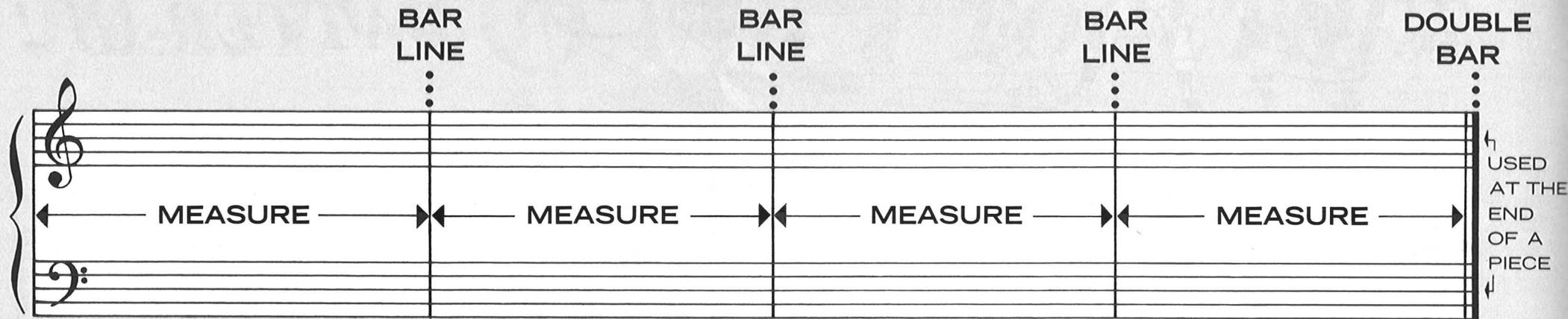


# THE GRAND STAFF



## HOW TO TELL CHORDS FROM BASSES

CHORDS ARE WRITTEN ABOVE THIS LINE.

BASSES ARE WRITTEN BELOW THIS LINE.



BASS STEMS POINT UP!



CHORD STEMS POINT DOWN!

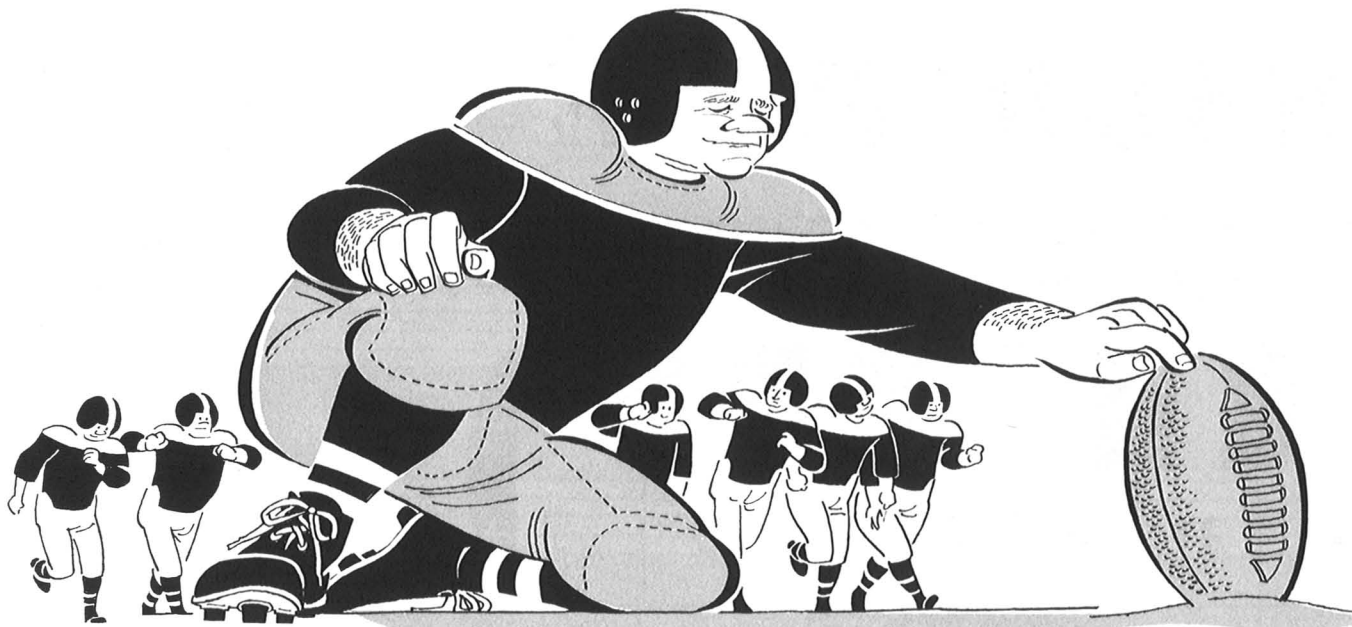


WHEN BASS AND CHORDS ARE PLAYED TOGETHER BOTH NOTES ARE ON ONE STEM, WHICH MAY POINT EITHER WAY...

PLAY:



YOU SHOULD KNOW C, C CHORD, G, G CHORD BY RECOGNITION!



# ***THE KICK-OFF!***

Musical notation for the first system of "THE KICK-OFF!". The treble clef staff contains a sequence of notes with fingerings: 3, 5, 3, 1, 2, 4, 2, 5. The bass clef staff contains a sequence of notes with a "M" marking above the first measure.

LETTER NAMES IN BASS HAVE BEEN PURPOSELY OMITTED!

Musical notation for the second system of "THE KICK-OFF!". The treble clef staff contains a sequence of notes with fingerings: 3, 5, 3, 1, 2, 5, 1, 1. The bass clef staff contains a sequence of notes with "M" markings above the first, fourth, and seventh measures.

***“BATTER-UP”*** and ***“THE KICK-OFF”*** may be played as a **DUET!**